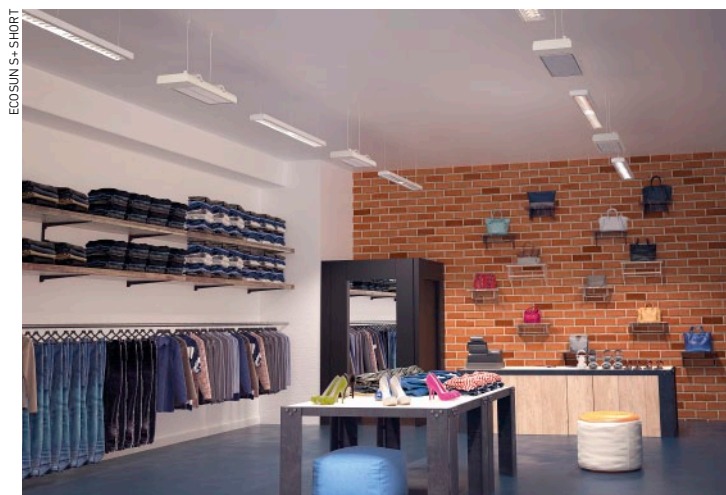


HIGH TEMPERATURE RADIANT PANELS



► **ECOSUN S+ / S+Anticor** – for industrial halls, gyms, halls, workshops, with a rating that corresponds to the given environment. Suitable for drying of buildings. For spaces with higher humidity – agricultural structures, washing facilities, panels are produced in a corrosion-proof version S+Anticor.

TYPE	[W]	[V]	Weight netto [kg]	Qty on pallet	Recommended clearance	Dimensions [mm]	Cat. No.	
							S+	S+ Anticor
ECOSUN S+ 06 short	600	230	4	68	According to individual conditions, for full area 5–8 m, zonal 3.4–4.5 m	650×250×60	5401537	–
ECOSUN S+ 08 short	850						5401538	–
ECOSUN S+ 09 / Anticor	900		7.8	58		1550×150×60	5401540	5401552
ECOSUN S+ 12 / Anticor	1200	5401542					5401554	
ECOSUN S+ 18 / Anticor	1800	230 / 400 2N	12.2	39		1550×250×60	5401544	5401556
ECOSUN S+ 24 / Anticor	2400						5401546	5401558
ECOSUN S+ 30 / Anticor	3000	230 / 400 3N	17	26	1550×350×60	5401548	5401560	
ECOSUN S+ 36 / Anticor	3600					5401550	5401562	
Corrective varnish for the lamellas of ECOSUN high-temperature panels							2451213	

■ **Class I; Rating IP 44; Basic colour:** S+ (white – RAL 9002) / S+Anticor (RAL 9002).

ACCESSORIES FOR HIGH TEMPERATURE PANELS

► **TILTABLE BRACKET** – this tiltable bracket enables the installation of ECOSUN S+/Anticor panels at an angle, and thus the aiming of the heat flow at the required area. The bracket can be used for ceiling as well as wall installation; the package contains 1 pair of brackets (two pieces).

TILTABLE BRACKET	Cat. No.
FOR ECOSUN S+	5401785
FOR ECOSUN S+ ANTICOR	5401787

► **FLUSH MOUNT FRAME** – the flush mount frame enables the installation of ECOSUN S+ into plasterboard and plaster fibreboard suspended ceilings in such a way that the heating lamellas are on the same level as the ceiling. The frame solves not only the visual aspect of the ends of the edges of the suspended ceiling, but also the necessary distance between the panel and the ceiling structure.

FLUSH MOUNT FRAME	Cat. No.
FOR ECOSUN S+ 18 / S+ 24 (RAL 9002)	5401802


► **PROTECTIVE GRILLE** – the protective grille protects the lamellas of ECOSUN S+ high-temperature panels against mechanical damage (for example, by a ball in a gym) and simultaneously prevents objects from coming into direct contact with the hot surface of the heating lamellas.

PROTECTIVE GRILLE	Cat. No.
FOR ECOSUN S+ 09–12	5401790
FOR ECOSUN S+ 18–24	5401792
FOR ECOSUN S+ 30–36	5401794



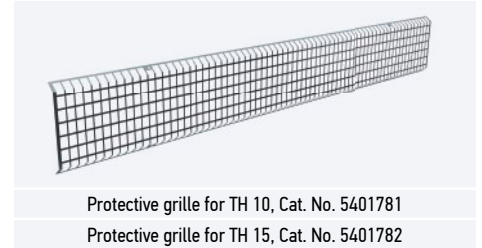
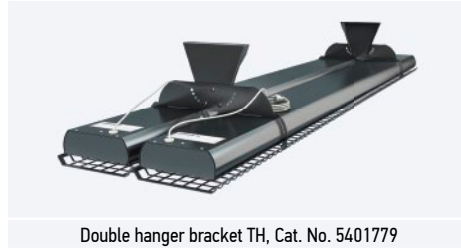
TERRACE HEATERS

► **ECOSUN TH** (Terrace Heaters) are designed for the zonal heating of winter gardens, enclosed and roofed balconies and terraces, garden tents, churches, etc. – i.e., applications where they are protected against direct contact with the effects of the weather. Tiltable brackets are included with the product.

	TYPE	[W]	[V]	Weight netto [kg]	Qty on pallet	Recommended clearance	Dimensions [mm]	Cat. No.
	ECOSUN TH 1000	1000	230	4.2	68	min. 1.8 m	1080×140×45	5401350
	ECOSUN TH 1500	1500		6.5	68		1580×140×45	5401353


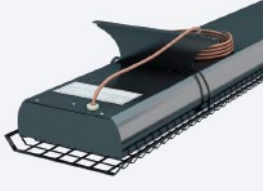
■ **Class I; Rating IP 45; Colour:** matt black; **Connection cable:** 2 m cold lead with plug

■ The min. height at which such panels can be installed is 1.8 m above the floor (the lower edge of the panel); for panels installed on the ceiling there must be a min. gap of 30 cm between the ceiling and the upper edge of the panel.



RADIANT HEATERS FOR CHURCH PEWS

► **ECOSUN CH** (Church Heaters) are designed for the heating of church pews with the heater placed below the pew seat. The product features a protective grille which prevents the user from coming into contact with the heating lamellas. The panel cover, protective grille and heating lamellas are matt black, and thus blend in very well with the dark wood of the pews without detracting from the dignity of the surrounding spiritual environment. The panels are fitted with mounting brackets for attaching them to the bottom side of the seat, and with a black two-metre connection cable in a silicone sheath.

	TYPE	[W]	[V]	Weight netto [kg]	Qty on pallet	Dimensions [mm]	Cat. No.	
	ECOSUN CH 02	260	230	3.8	20	730×155×115	5401359	
	ECOSUN CH 04	400		4.3		1096×155×115	5401360	
	ECOSUN CH 06	600		6.5		1596×155×115	5401362	

■ **Class I; Rating IP 44; Colour:** matt black; **Connection cable:** 2 m

