

► **ECOSUN G** – a glass radiant panel derived from GR panels. Slim profile – just 20 mm (panel with frame). The panel is supplemented with thermal insulation, with a frame from eloxed aluminium and versatile fixtures which enable installation both on a wall (vertically) and on the ceiling (horizontally).

| TYPE | [W] | [V] | Rating | Dimensions * [mm] | Weight netto [kg] | Recommended installation | Qty on pallet | Cat. No. |
|---------------------|-----|-----|--------|-------------------|-------------------|--|---------------|----------|
| | | | | | | | | |
| ECOSUN G 300 white | 300 | 230 | IP 44 | 600×600×30 | 7.3 | for ceiling min. 2.5 m, or on the wall | 30 | 5437110 |
| ECOSUN G 600 white | 600 | | | 1200×600×30 | 13.6 | | 15 | 5437112 |
| ECOSUN G 850 white | 850 | | | 1200×800×30 | 16.5 | | 15 | 5437114 |
| ECOSUN G 300 black | 300 | | | 600×600×30 | 7.3 | | 30 | 5437116 |
| ECOSUN G 600 black | 600 | | | 1200×600×30 | 13.6 | | 15 | 5437118 |
| ECOSUN G 850 black | 850 | | | 1200×800×30 | 16.5 | | 15 | 5437120 |
| ECOSUN G 300 mirror | 300 | | | 600×600×40 | 9.8 | | 30 | 5437126 |
| ECOSUN G 600 mirror | 600 | | | 1200×600×40 | 18.9 | | 15 | 5437128 |

Accessories: cable suspension system; spacing set; ceiling fixing frame – see page 10

■ Option of installing on a class C or D flammable base; **Class II**; **Connection cable**: length of supply cables 2 m with plug connection.

► **ECOSUN G / with printed surfaces** – it is rather an innovation applied to our current ECOSUN G glass panels.

| TYPE | [W] | [V] | Rating | Dimensions * [mm] | Weight netto [kg] | Recommended installation | Qty on pallet | Cat. No. |
|-------------------------|-----|-----|--------|-------------------|-------------------|--|---------------|----------|
| ECOSUN G 300 with print | 300 | 230 | IP 44 | 600×600×30 | 7.3 | for ceiling min. 2.5 m, or on the wall | 30 | 5437471 |
| ECOSUN G 600 with print | 600 | | | 1200×600×30 | 13.6 | | 15 | 5437473 |

Accessories: cable suspension system; spacing set; ceiling fixing frame – see page 10

■ Option of installing on a class C or D flammable base; **Class II**; **Connection cable**: length of supply cables 2 m with plug connection.



→ See our web Gallery.

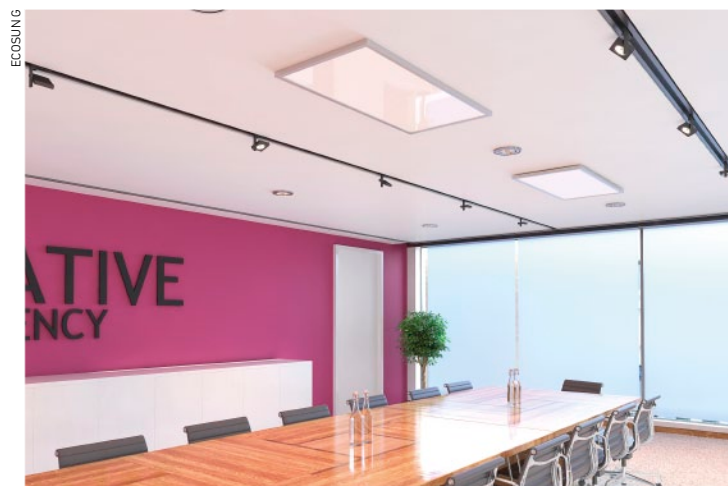


► **ECOSUN E** – an alternative version of the ECOSUN G glass radiant panel. For this panel, the front glass has been substituted by a panel with a plastic powder coating; is suitable e.g. for health care applications.

| TYPE | [W] | [V] | Rating | Dimensions * [mm] | Weight netto [kg] | Recommended installation | Qty on pallet | Cat. No. |
|--------------------|-----|-----|--------|-------------------|-------------------|--|---------------|----------|
| ECOSUN E 300 white | 300 | 230 | IP 44 | 600×600×30 | 5.9 | for ceiling min. 2.5 m, or on the wall | 30 | 5437140 |
| ECOSUN E 600 white | 600 | | | 1200×600×30 | 10 | | 15 | 5437142 |
| ECOSUN E 850 white | 850 | | | 1200×800×30 | 9.55 | | 15 | 5437145 |

Accessories: cable suspension system; ceiling fixing frame – see page 10

■ Option of installing on a class C or D flammable base; **Class II**; **Connection cable**: length of supply cables 2 m with plug connection.



* Thickness includes mounting fixture, which is an inseparable part of the panel.

► **ECOSUN GS** – a glass radiant panels, which combine the elegant design of frameless GR panels and the versatility of ECOSUN panels – the brackets enable the installation of the GS panel on the wall (vertically) and on the ceiling (horizontally). In rooms with limited space such as the bathroom is adapted the type of ECOSUN GS 500, which with its dimensions fits to vertical installation. The panel is fitted with a thermal fuse.

| TYPE | [W] | [V] | Rating | Dimensions * [mm] | Weight netto [kg] | Qty on pallet | Cat. No. | | | | | |
|----------------------|-----|-----|--------|-------------------|-------------------|---------------|----------|---------|---------|---------------|----------|----------|
| | | | | | | | WHITE | BLACK | BASALT | PLATINUM GRAY | GRAPHITE | WINE RED |
| ECOSUN GS 300 | 300 | 230 | IP 44 | 585×585×40 | 9.7 | 30 | 5437148 | 5437154 | 5437186 | 5437187 | 5437188 | 5437185 |
| ECOSUN GS 500 | 500 | | | 1200×400×40 | 14.05 | 15 | 5437180 | 5437182 | 5437179 | 5437181 | 5437183 | 5437178 |
| ECOSUN GS 600 | 600 | | | 1185×585×40 | 17.6 | 15 | 5437150 | 5437156 | 5437196 | 5437197 | 5437198 | 5437195 |
| ECOSUN GS 850 | 850 | | | 1185×785×40 | 21.85 | 15 | 5437152 | 5437158 | - | - | - | - |
| | | | | | | | MIRROR | | | | | |
| ECOSUN GS 300 mirror | 300 | 230 | IP 44 | 585×585×41 | 11.55 | 30 | 5437160 | | | | | |
| ECOSUN GS 500 mirror | 500 | | | 1200×400×41 | 16.5 | 15 | 5437184 | | | | | |
| ECOSUN GS 600 mirror | 600 | | | 1185×585×41 | 21.15 | 15 | 5437162 | | | | | |

Accessories: cable suspension system; spacing set; ceiling fixing frame; supports (new); towel rail – see page 10

- **Recommended installation:** for ceiling min. 2.5 m (GS 300, GS 500, GS 600); for ceiling min. 3 m (GS 850); or on the wall
- **Class II; Connection cable:** length of supply cables 1.9 m with plug connection.



► **ECOSUN GS / with printed surfaces** – it is rather an innovation applied to our current ECOSUN GS glass panels.

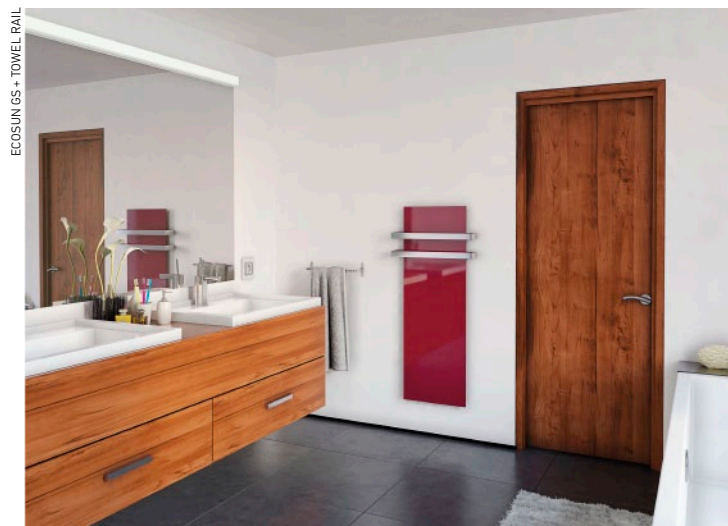
| TYPE | [W] | [V] | Rating | Dimensions * [mm] | Weight netto [kg] | Recommended installation | Qty on pallet | Cat. No. |
|--------------------------|-----|-----|--------|-------------------|-------------------|--|---------------|----------|
| ECOSUN GS 300 with print | 300 | 230 | IP 44 | 585×585×40 | 9.7 | for ceiling min. 2.5 m, or on the wall | 30 | 5437494 |
| ECOSUN GS 600 with print | 600 | | | 1185×585×40 | 17.6 | | 15 | 5437496 |

Accessories: cable suspension system; spacing set; ceiling fixing frame; supports (new); towel rail – see page 10

- **Class II; Connection cable:** length of supply cables 1.9 m with plug connection.



See our web Gallery.



* Thickness includes mounting fixture, which is an inseparable part of the panel.